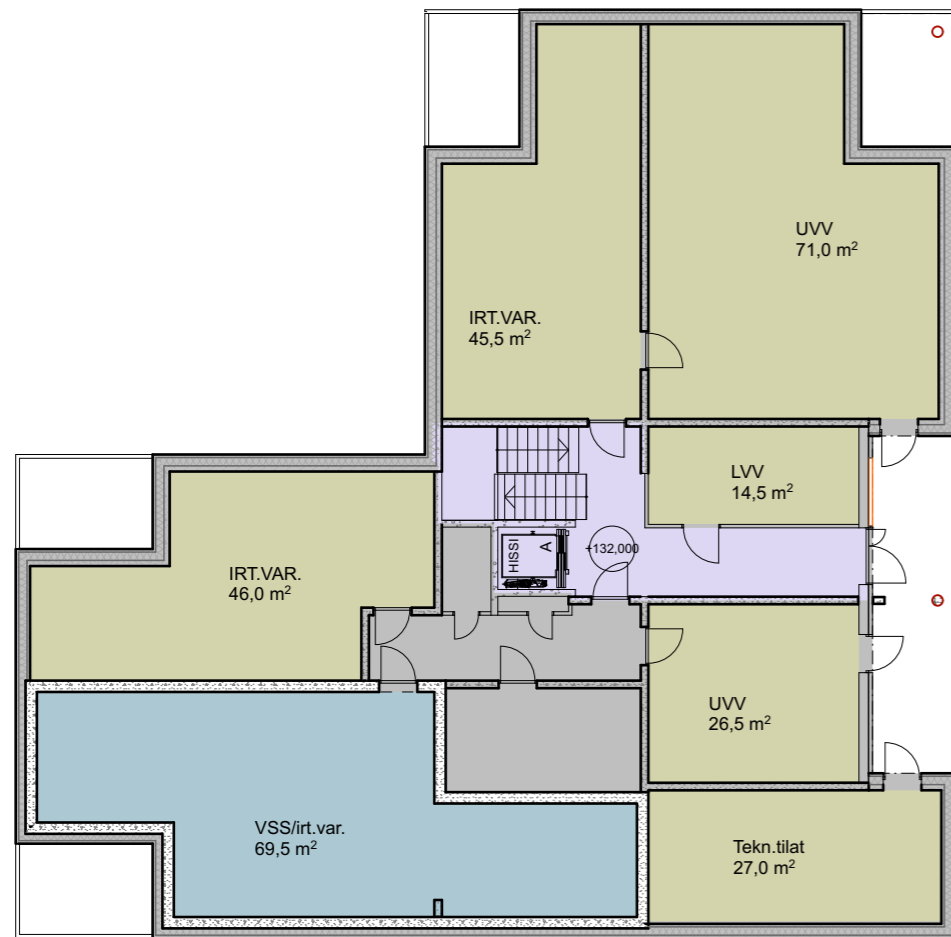
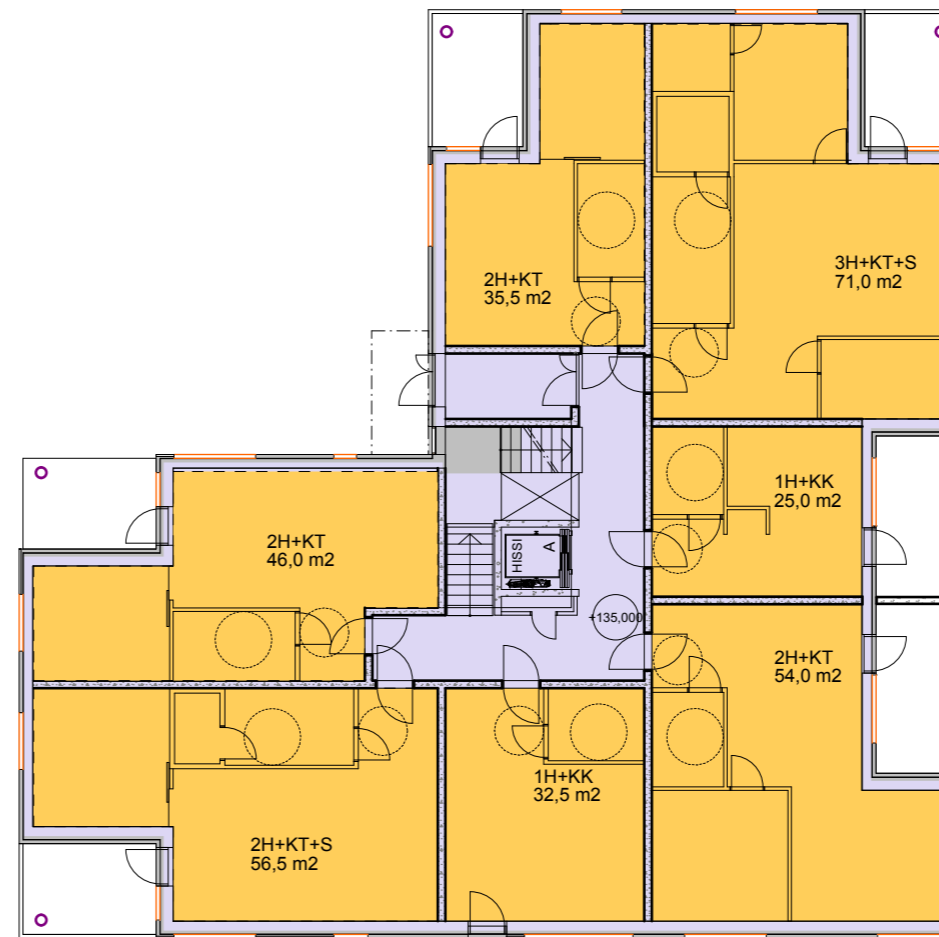


Asema - 1/400

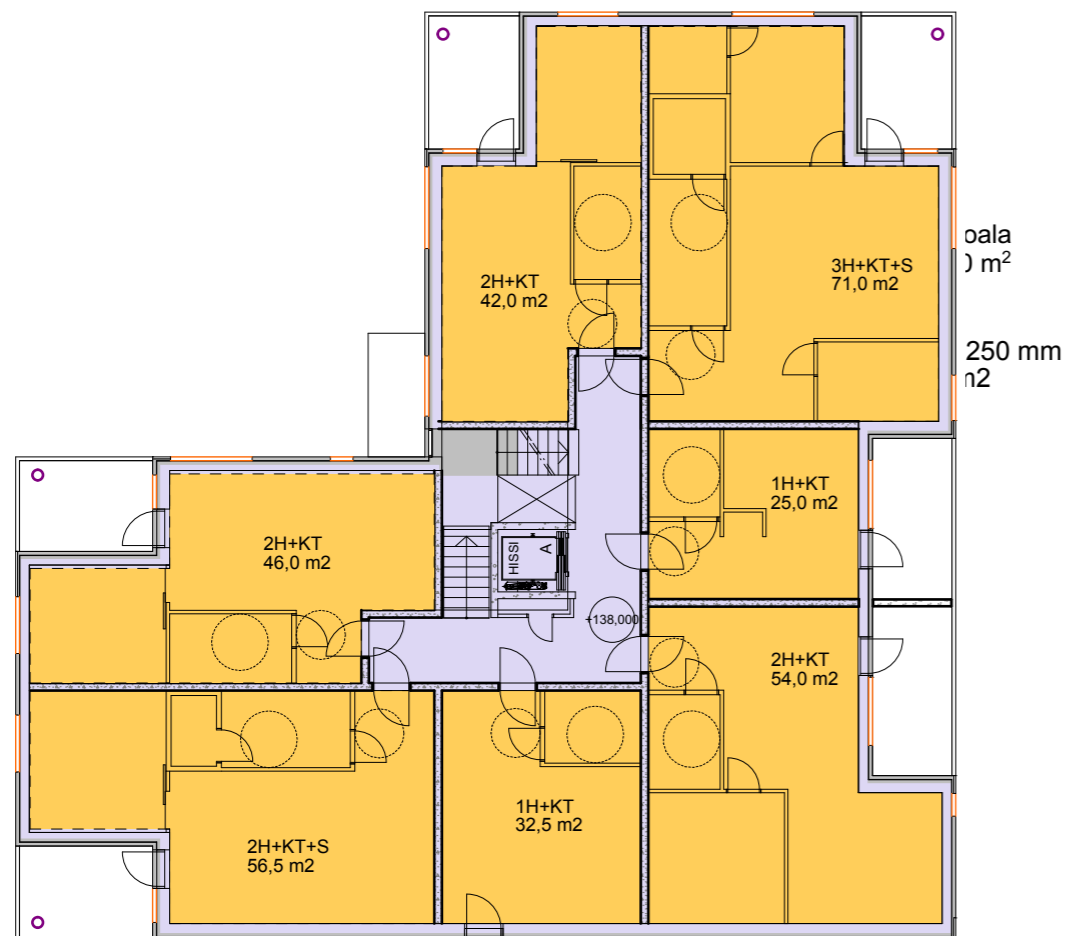
Tesomankuja, L-talo HELAMAA & HEISKANEN



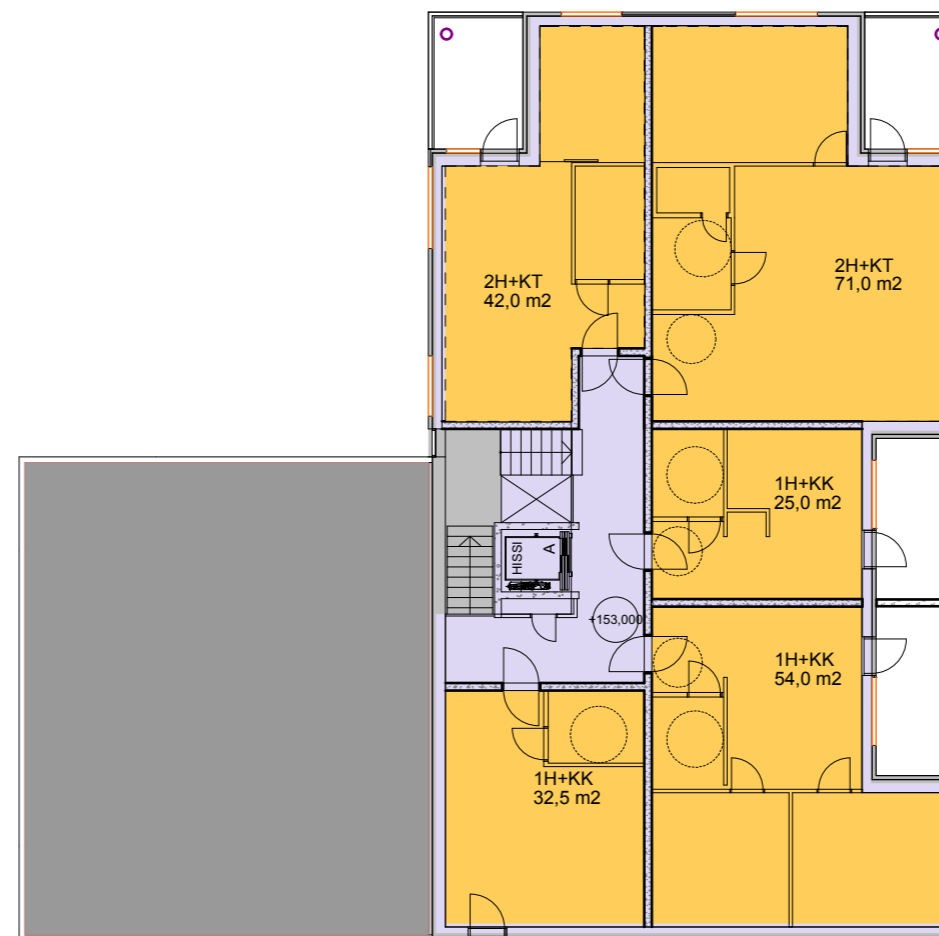
1. kerros



2. kerros



3. - 7. kerros

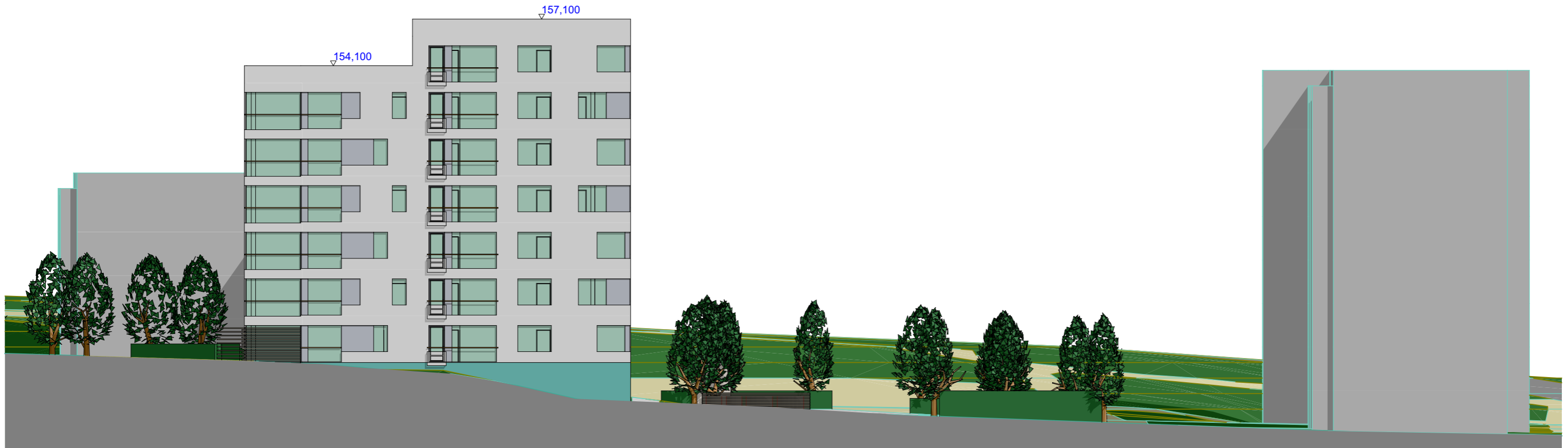


8. kerros

	as-ala	as kem 250	kem. aputila	brm2
8.krs	224,5	289,5		307,0
7.krs	327,0	406,0		427,5
6.krs	327,0	406,0		427,5
5.krs	327,0	406,0		427,5
4.krs	327,0	406,0		427,5
3.krs	327,0	406,0		427,5
2.krs	320,5	406,0		427,5
1.krs	0,0	33,5	324,0	427,5
Yhteensä	2180,0	2759,0	324,0	3299,5

Asuntoja yht. 54 kpl

autopaikat 1/110 kem2 250 26
pp-paikat 1/40 kem2 69



Etelään



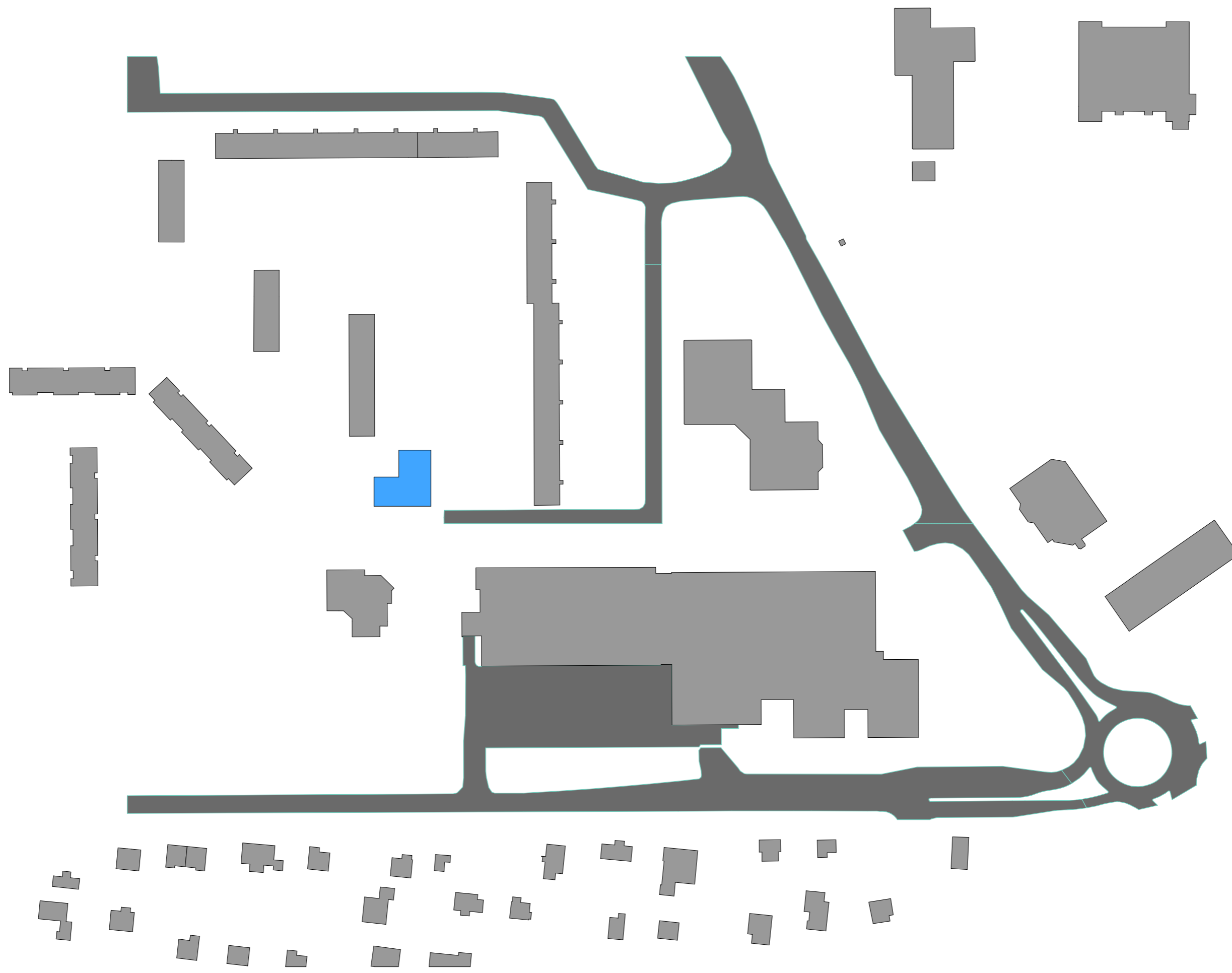
Pohjoiseen



Itään



Länteen





Valokuvasovitus



Mallinäkömä

Visualisointeja

Tesomankuja, L-talo HELAMAA & HEISKANEN